

# Finnish Lapphund

the Breed Standard & How to Interpret It



# HISTORY

- Originally the Lappish dog was just one breed which was split into two: Finnish Lapphund & Lapponian Herder
- It was important to recognise the correct type and make it uniform
- All colors were preserved



# GENERAL APPEARANCE

- Strong but not heavy
- **Slightly** longer than tall. Proportions not square
- Ribcage should not reach the elbows
- Upright carriage (such as that of the Finnish Spitz) not desirable





# TYPE

- Type is the most important feature and must be preserved
- Primitive, animal-like appearance is desirable
- A Finnish Lapphund should not be too polished and Poodle-like, but instead a rugged dog from the harsh conditions of Lapland



# DOGS OF INCORRECT TYPE





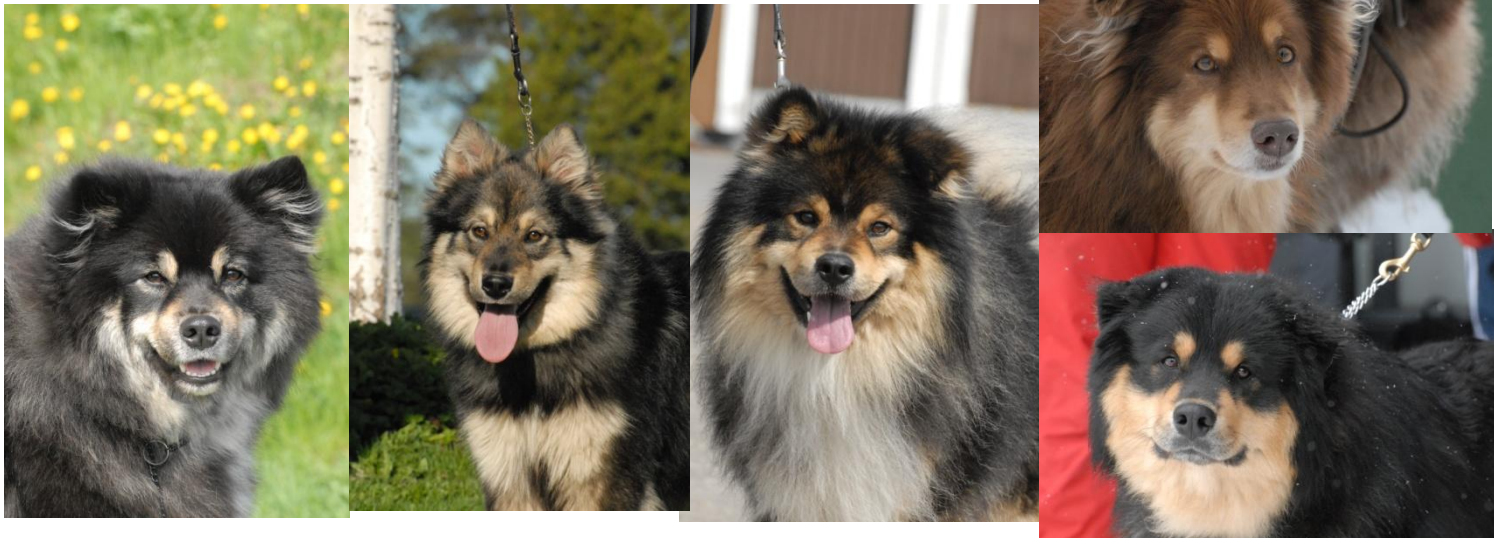
# HEAD

- Head features are strong
- Soft expression is of utmost importance
- Skull relatively broad
- Stop clearly defined
- Frontal furrow visible
- Zygomatic arches clearly defined



# EARS

- Ears should be set rather wide apart. Ears set too close to each other (at the top of the skull) contribute to an incorrect sharp expression
- Tipped ears, and odd ears (one tipped, the other erect), are equally acceptable as erect ears
- Ears with round tips are equally acceptable as pointed ears
- Drop ears are a mistake that should be penalized





# EYES

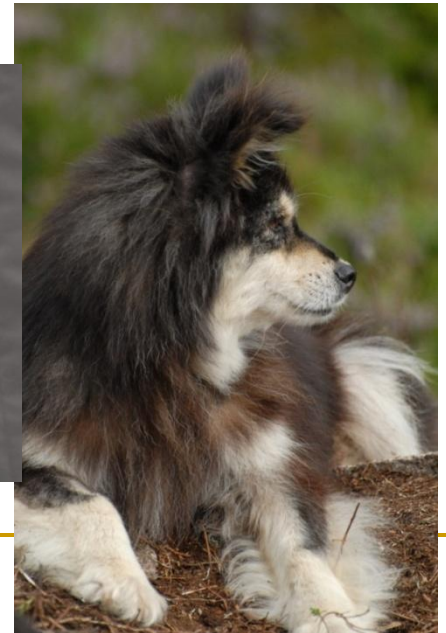
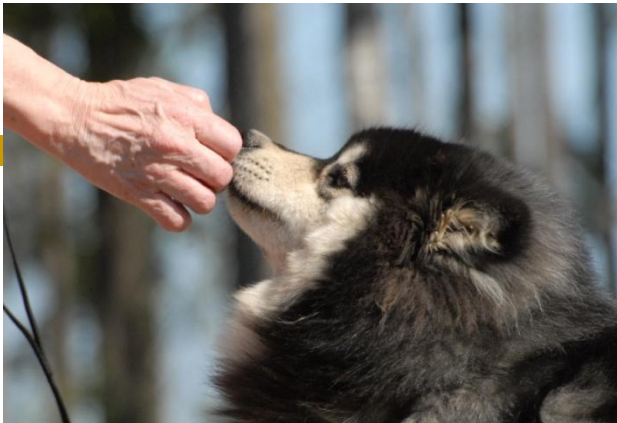
- Eyes must be dark (brown dogs may have lighter eyes). Blue eyes are a disqualifying mistake.
- Too light eyes are "piercing" and ruin the expression
- Round eyes are incorrect, almond shape is the correct shape





# MUZZLE

- Muzzle should be slightly shorter than the skull
- Viewed from the side, the muzzle should resemble a split hamburger bun with its top and bottom
- Well cushioned right behind the nose and further
- Nose pigment preferably black, however, in harmony with coat color
- Lips tight, preferably forming a smile
- Long muzzles without appropriate cushioning are a common mistake
- Weak underjaws another common mistake



# BODY

- Withers should be visible (especially on males)
- Back should be strong and straight
- Ribcage should be deep and long, however, not too heavy
- Ribs well sprung, however, a barrel chest not acceptable
- Tuck-up not very prominent as that would make the ribcage too short





# CROUP

- Croup should be short and muscular
- Curved croups are a common mistake
- Incorrect sloping croups another common mistake – these dogs tend to stand their rear legs underneath their body
- An incorrect croup often results in a low tailset



# ANGULATION

- The Lapponian Herder is a pure trotter whereas the Finnish Lapphund is a mix of trotting and galloping types
- The Lapponian Herder is very well angulated whereas the Finnish Lapphund is moderately angulated
- The front and rear angulation have to match each other
- There are lots of Finnish Lapphunds with an imbalance of angulation (i.e. they have poor front angulation but good rear angulation)





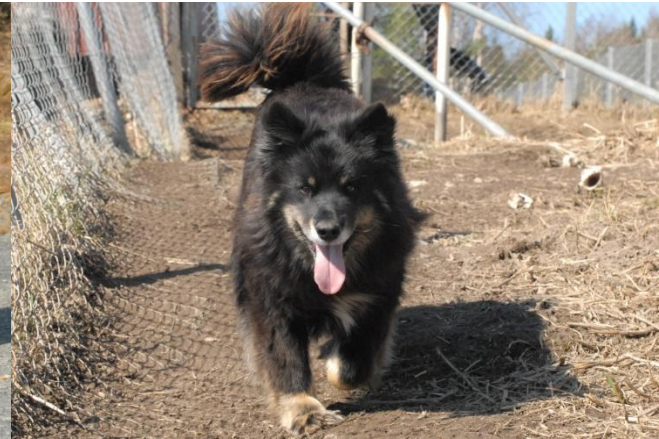
# TAIL

- Relatively high set
- A "J" shaped hook at the tip of the tail is acceptable, however, a kinky tail is a disqualifying fault
- The tail should not be a tightly curved "pig's tail" but instead it should form a beautiful arch
- On the move, the tail is curved over the back or the loin, however, it may hang at rest



# MOVEMENT

- Movement is effortless. The Finnish Lapphund tends to single-track
- Hock relatively low, proper reach is desired
- Short upper arms are a common mistake, which makes the front step short and the chest poor.
- Other common mistakes are loose elbows as well as cow hocks





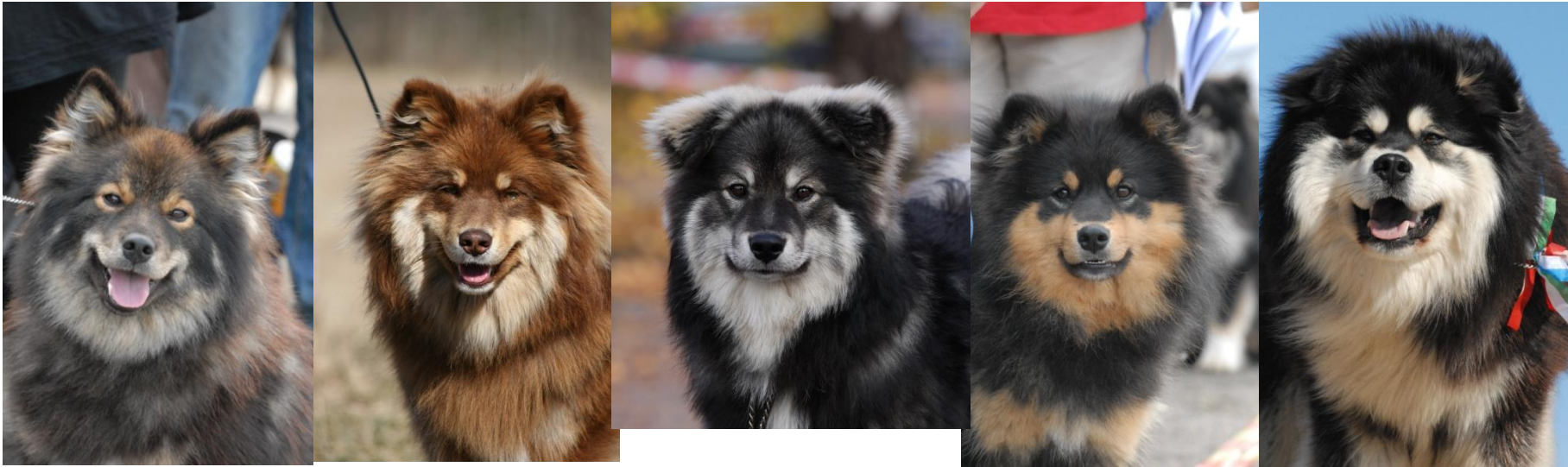
# COAT

- Double coat is a must. A Finnish Lapphund must have a proper undercoat
- Outer coat is a straight and harsh stand-off coat. Matt coat preferred over shiny coat.
- Leg furnishings are an important feature
- The coat should not be woolly, soft, or wavy
- Too abundant coat is not desirable as it can ruin the outline of the dog



# TEMPERAMENT

- Happy, friendly, social, people-loving
- Bitches are supposed to be submissive
- This breed is not aggressive, timid, restless or sharp
- Aggressive or misbehaving dogs must be excused from the ring





---

# THANK YOU FOR LISTENING

